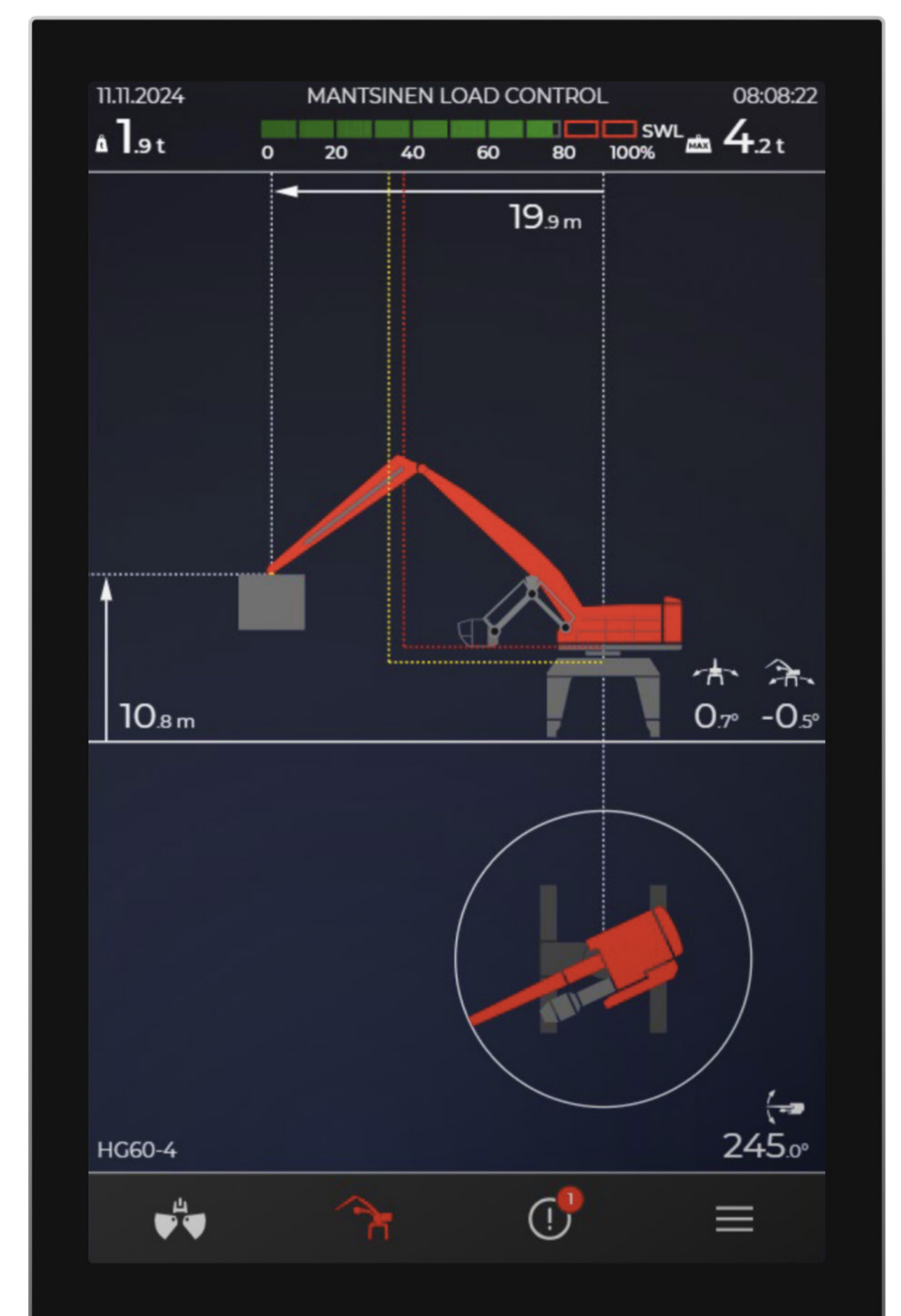




MANTSINEN SAFETY SYSTEM

The Mantsinen Safety System ensures safe and sustainable material handling – for operators and machines alike. Improved features and diagnostics improve usability, increase efficiency, and offer valuable information that help you optimize your operations.



FEATURES

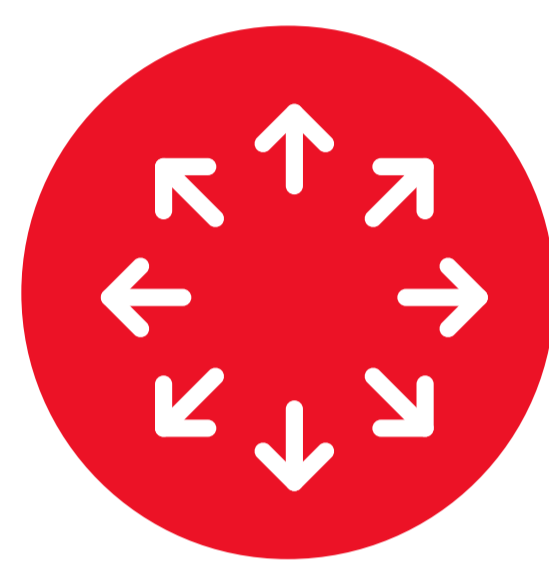
- Effective cabin protection.
- Sector restrictions for enhanced collision prevention.
- Rotation limitations: angle limits and speed.
- Refined 3D kinematic calculations.
- Optimized parameter tool.
- Remote access capability for program loading and parameter adjustments.
- Adjustable attachment-specific work parameters.
- Possibility to integrate Mantsinen Load Tracking Interface on the same screen.
- 10.1 inch touchscreen, with brightness adjustment.

STAY SAFE, GET EFFICIENT.



SAFETY

- Improved cabin protection to better observe approaching obstacles.
- Collision prevention, sector restrictions, angle and speed restrictions when swinging.
- Temporary reduced safety area (for loading deck cargo) activated/deactivated according to front equipment tip location.



MANEUVERABILITY

- Includes vertical lift, semi-automatic operation, and cabin lift trajectory restriction and cushioning.
- Enhanced boom steering and restricting allows case-specific safety arrangements.
- Adjustable attachment-specific work parameters.
- Acceleration-compensated load calculation enables more precise weighing and more effective overload monitoring.



MAINTAINABILITY

Improved diagnostics improve maintenance:

- Helps determine the maintenance interval of the cylinders.
- Enables machine performance assessment.
- Allows reviewing of basic adjustments.
- Includes work cycle calculations that consider machine fatigue.



REMOTE ACCESS

- Possibility to load programs and adjust parameters remotely.
- Remote troubleshooting and support.
- Saving the last work cycle incl. load weights, rotations and distances, Safety System halts etc.

**SCAN
THE QR CODE
AND SEE IT
IN ACTION**

